

rioTECH
Instruments

Protecting Production By Monitoring Machinery

ANNOUNCING THE VTU1X-MINI-D HIGH SPEED DIGITAL SHUTDOWN SYSTEM PLUS CONDITION MONITORING

An effective high speed shutdown system that not only trips when an upset occurs, but can also warn of eminent shutdown by monitoring the condition of your compressor or engine!

- **Simple to install:** Basic setup starts with as little as **three connections**
- **No external sensors required**
- **Simple to configure:** Windows based software allows precise settings
- **Many powerful options:**
 - Can warn of degrading condition before shutdown
 - On board memory allows operators to see the history of a machine's operating condition
 - Real time clock time stamps events
 - Tach input allows monitoring of variable speed machines

The VTU1X MINI-D protects and warns* equipment from the following:

- Liquid Slugs
- Loose Supports and Wedges
- Stationary Bolting Integrity
 - Frame to Foundation
 - Distance Piece to Frame
 - Cylinder to Distance Piece
 - Cylinder Supports
 - Pulsation Events
 - Piping Integrity (Bottles and Scrubbers)

*With optional second digital output

VTU1X MINI-D Specifications:

- Outputs: 1 - Digital Output
 - HH - Indicates Shutdown
- Optional 2nd digital output. Blink rate increases with percent to shutdown
- Update Rate: (depends on RPM)
 - Partial-Under 4 revolutions
 - Full-Under 8 revolutions
- RPM Range: 300 - 2000
- Speed Variance Without Tach: +/- 10%
- Optional: Tach input
- Memory: Up to 2 years
- Voltage: 12 - 24VDC, < 1 Watt
- Class 1 Div 1 Approvals: **FM**

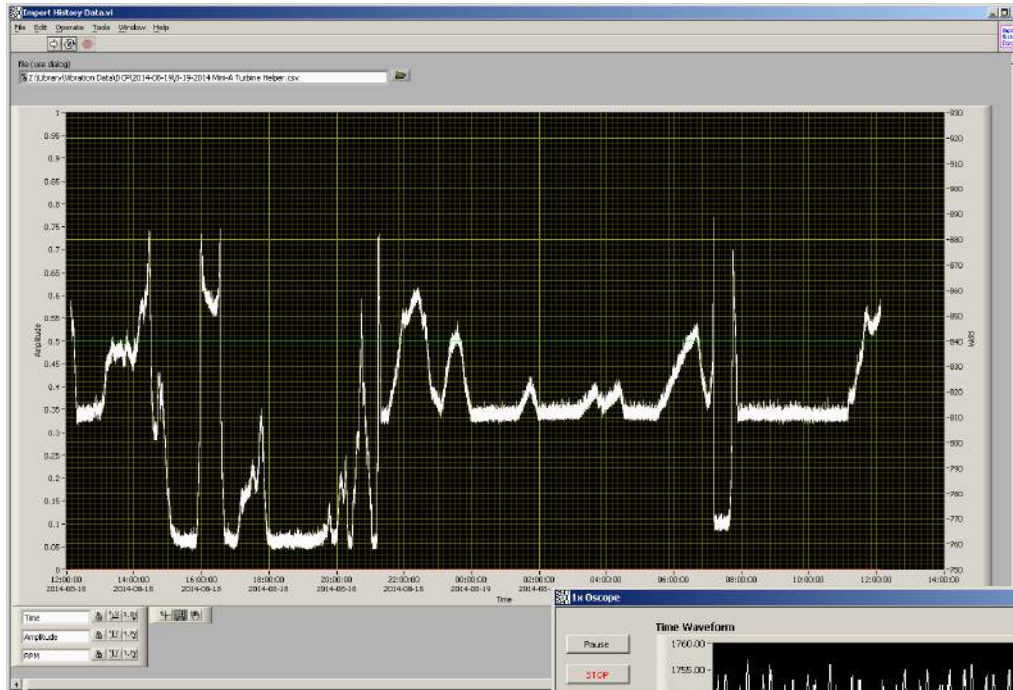
**RIOTECH
INSTRUMENTS LLLP**

27326 Robinson Rd STE 225
The Woodlands, TX 77385

Phone: 281-292-9051
Email: sales@riotechinst.com
Web: www.riotechinst.com

More than a simple shutdown system:

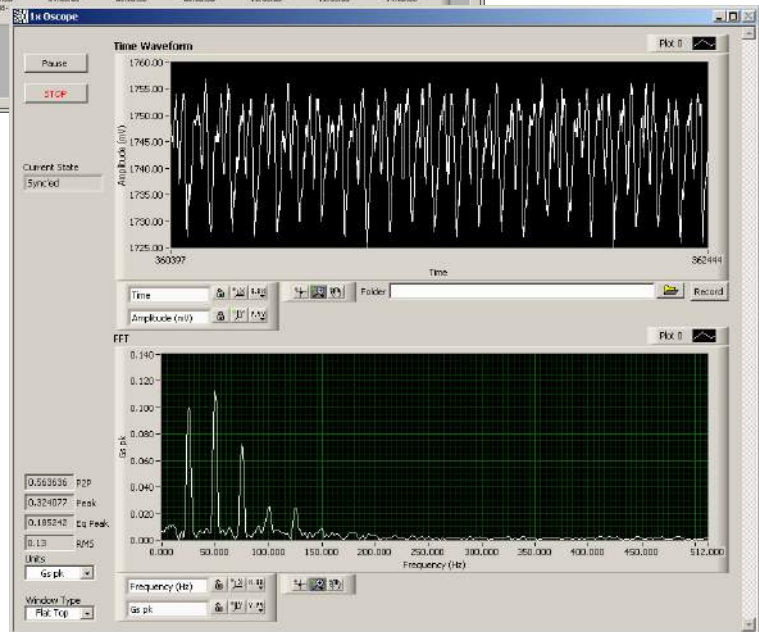
With optional 2nd output, the VTU1X-MINI-D will pulse a warning light every second to indicate vibration levels have exceeded the configured normal running vibration level but is not yet at the shutdown level. The number of pulses increases as the vibration level worsens.



History: The VTU1X-Mini-D stores historical data for later retrieval over USB connection.
 One day of 1-second data
 One week of 1-minute average and peak data
 One year of 1-hour average and peak data



VTU1X-MINI-D
 In Explosion Proof Enclosure



O'Scope Mode: Use oscilloscope mode to help troubleshoot problems when an alarm is activated or to determine baseline condition. In this mode, the VTU1X-Mini-D is basically a single-channel spectrum analyzer.

For more information about the Riotech Instruments reciprocating monitoring units as well as other condition monitoring products contact:

For Information and Technical Support:
 Frank Fifer
 Phone: 281-992-5824
 Cell: 832-274-9396

For Sales:
 Riotech Instruments
 Phone: 281-292-9051
 Cell: 832-443-6808